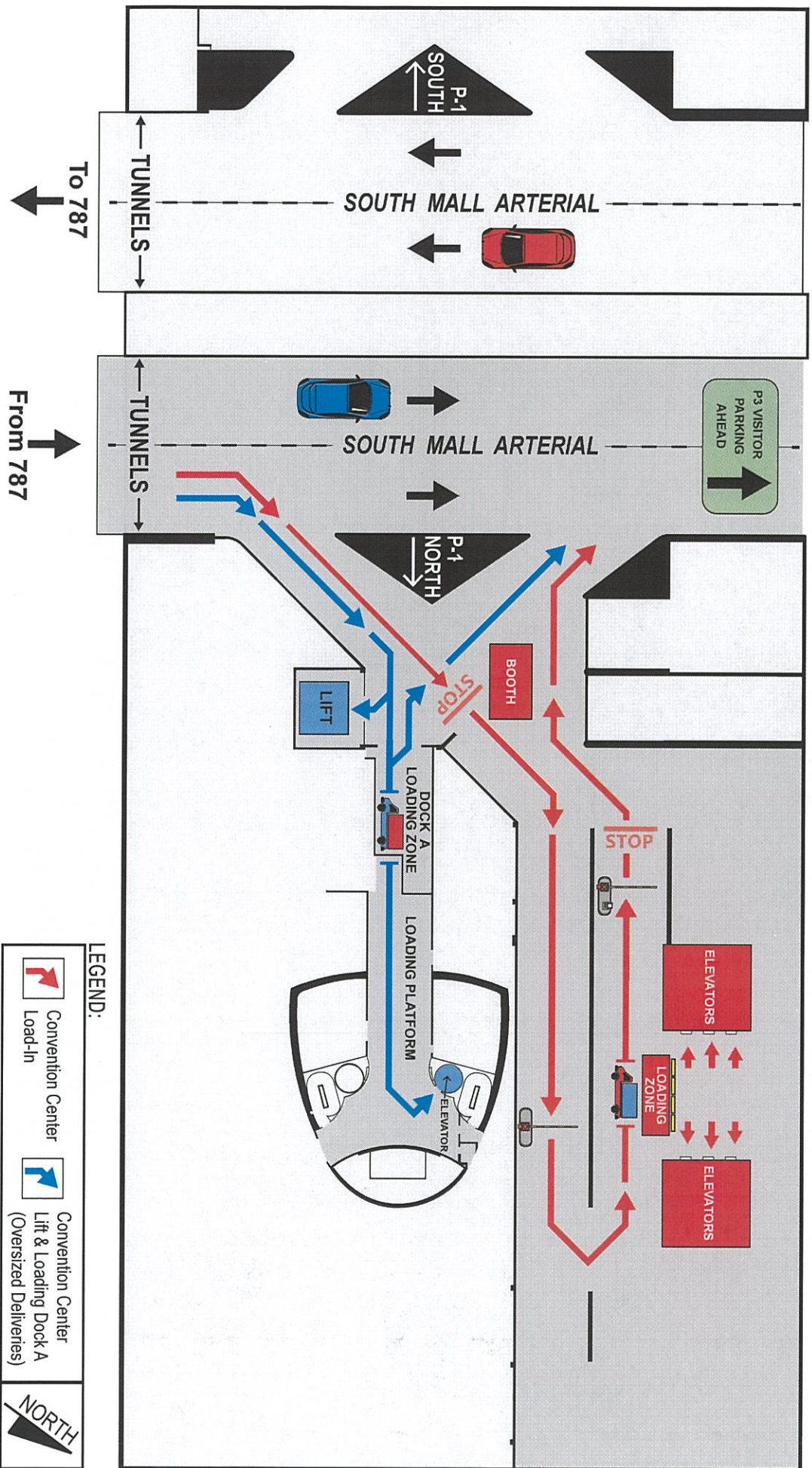


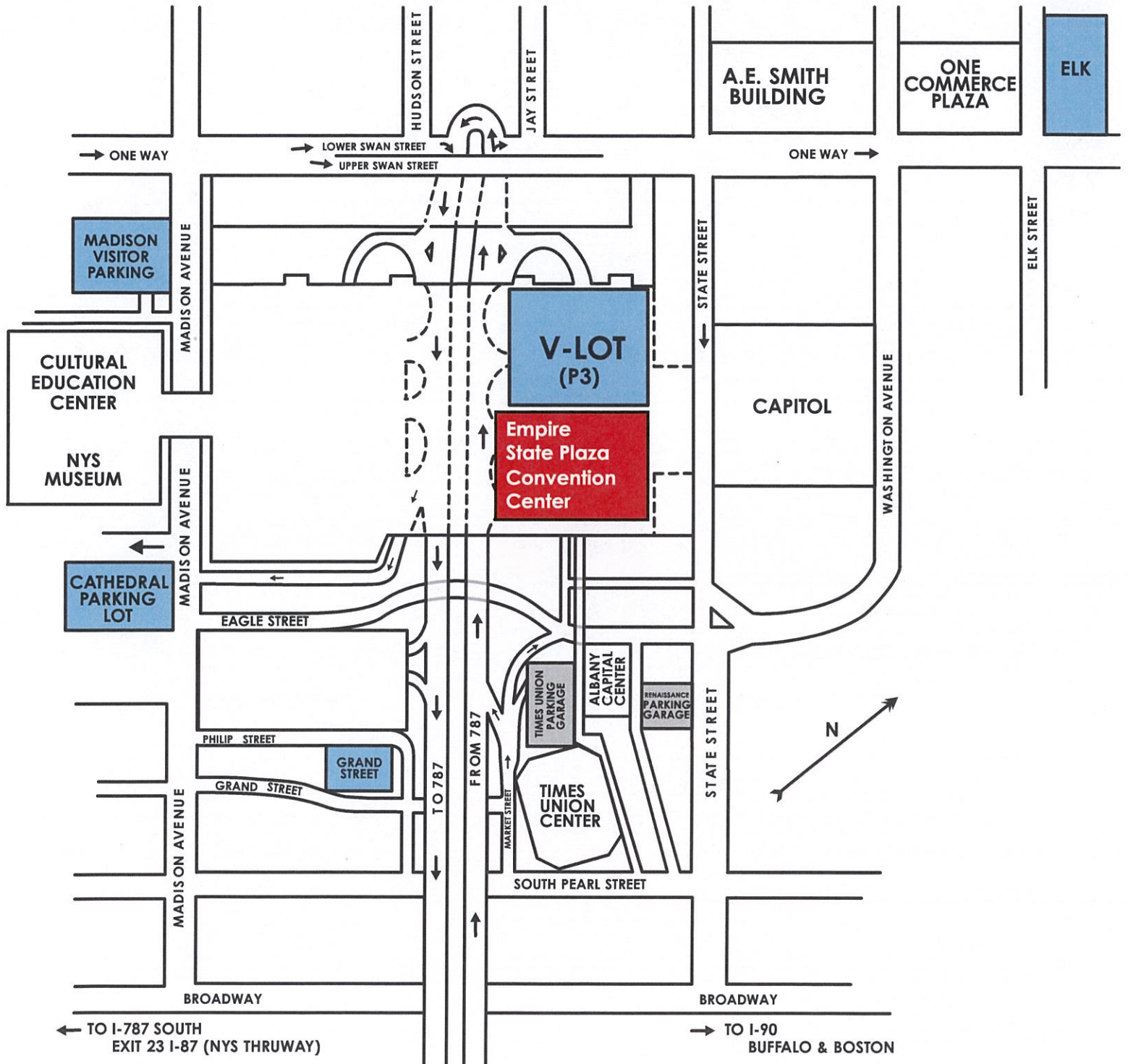
# P1 VENDOR UNLOADING ZONE





# Empire State Plaza Visitor Parking

parking.management@ogs.ny.gov  
518-474-8118



The Times Union and Renaissance Hotel parking garages are not OGS-managed parking facilities. Fee upon entry applies.



Office of  
General Services

## **Parking**

The Office of General Services operates several, pay by the day, visitor parking areas in and around the Empire State Plaza in downtown Albany, NY. For more information on parking for visitors, please visit: <https://empirestateplaza.ny.gov/parking>

### **V-Lot Parking**

The Empire State Plaza V-Lot (Visitors Lot) is the primary lot for visitors, located beneath the Empire State Plaza and accessed through I-787 Empire State Plaza exit.

#### **Monday - Friday**

6:00 a.m. - 10:59 a.m. - \$10.00 Pay on

Entry 11:00 a.m. - Until Close - \$5.00

Pay on Entry

#### **Weekends and State Holidays**

\$5.00 flat charge, Pay on

Entry 60 minutes or less,

full refund

### **Cathedral Lot**

Located on Madison Avenue between the Cultural Education Center and Albany Cathedral, and within easy walking distance to the Empire State Plaza and New York State Museum.

Monday – Friday: 6:00 am – 2:00 pm

For entry between 6:00 am– 9:59 am, \$10.00 flat rate, pay on entry

For entry between 10:00am– 3:00pm, \$5.00 flat rate, pay on entry; No charge for entry after 3:00 pm Weekends and State Holidays: Lot open, no charge

### **Madison Avenue Lot**

Located on Madison Avenue above the Cultural Education Center, and within easy walking distance to the Empire State Plaza and New York State Museum.

Monday – Friday: 6:00 am – 2:00 pm

For entry between 6:00 am– 9:59 am, \$10.00 flat rate, pay on entry

For entry between 10:00 am– 3:00 pm, \$5.00 flat rate, pay on entry. No charge for entry after 3:00 pm Handicap and oversized parking available

Weekends and State Holidays: Lot open, no charge

### **Reserved Parking**

Pending availability, clients can reserve parking spaces for their attendees in the V-Lot, Madison Lot, or Cathedral Lot. The cost is \$10 per space per day, Monday through Friday. Evenings (after 4pm) and weekends, the fee is \$5 per space per day. Reserved parking is not available on Tuesdays during Legislative Session. Placards identifying the client's event must be placed on the dashboard of all vehicles to guarantee entry to the lot. All reserved parking spaces must be placed with your Event Coordinator in advance.

*All rates are subject to change. All vehicles are subject to search by the New York State Police.*



## Empire State Plaza Concourse (indoors)

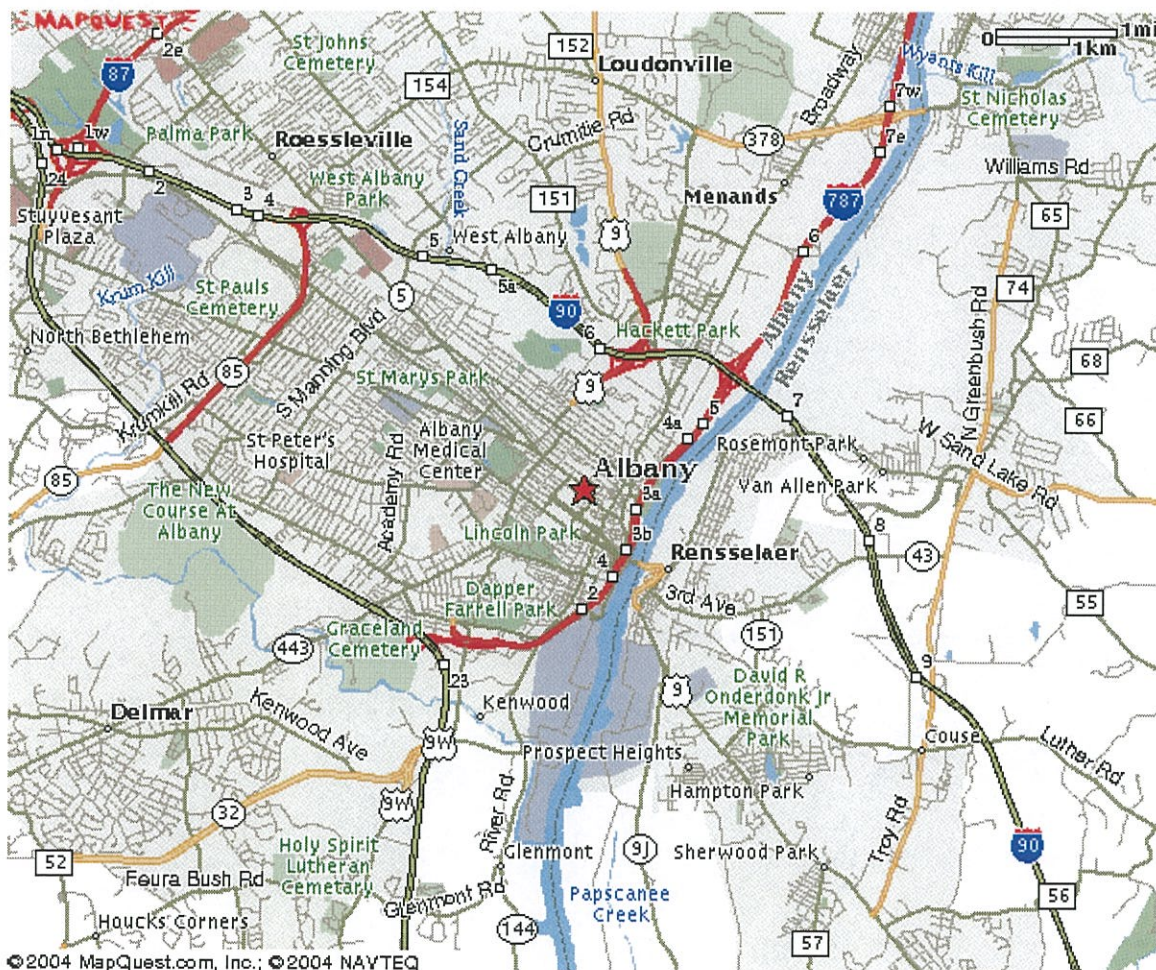
**From the North:** Take Interstate I-87 (Northway) to Interstate I-90 East (exit # 1E). Take Interstate I-90 East to Interstate 787 South. Take Exit #3A for the Empire State Plaza.

**From the South:** Take New York State Thruway (Interstate 87) to Exit 23 - straight through Toll Booth to Interstate 787, then take Exit #3 for the Empire State Plaza.

**From the East:** Take Interstate 90 West to Exit # B1 (I-90). Continue on I-90 to Interstate 787 South. Follow I-787 South to Exit #3A for the Empire State Plaza.

**From the West:** Take the New York State Thruway (Interstate 90) to Exit 24 (Albany), proceed east on Interstate 90 to Interstate 787 South. Take exit # 3A for the Empire State Plaza.

Unloading of merchandise takes place at level P-1 North - first turn on your right. Parking as designated in your confirmation letter.

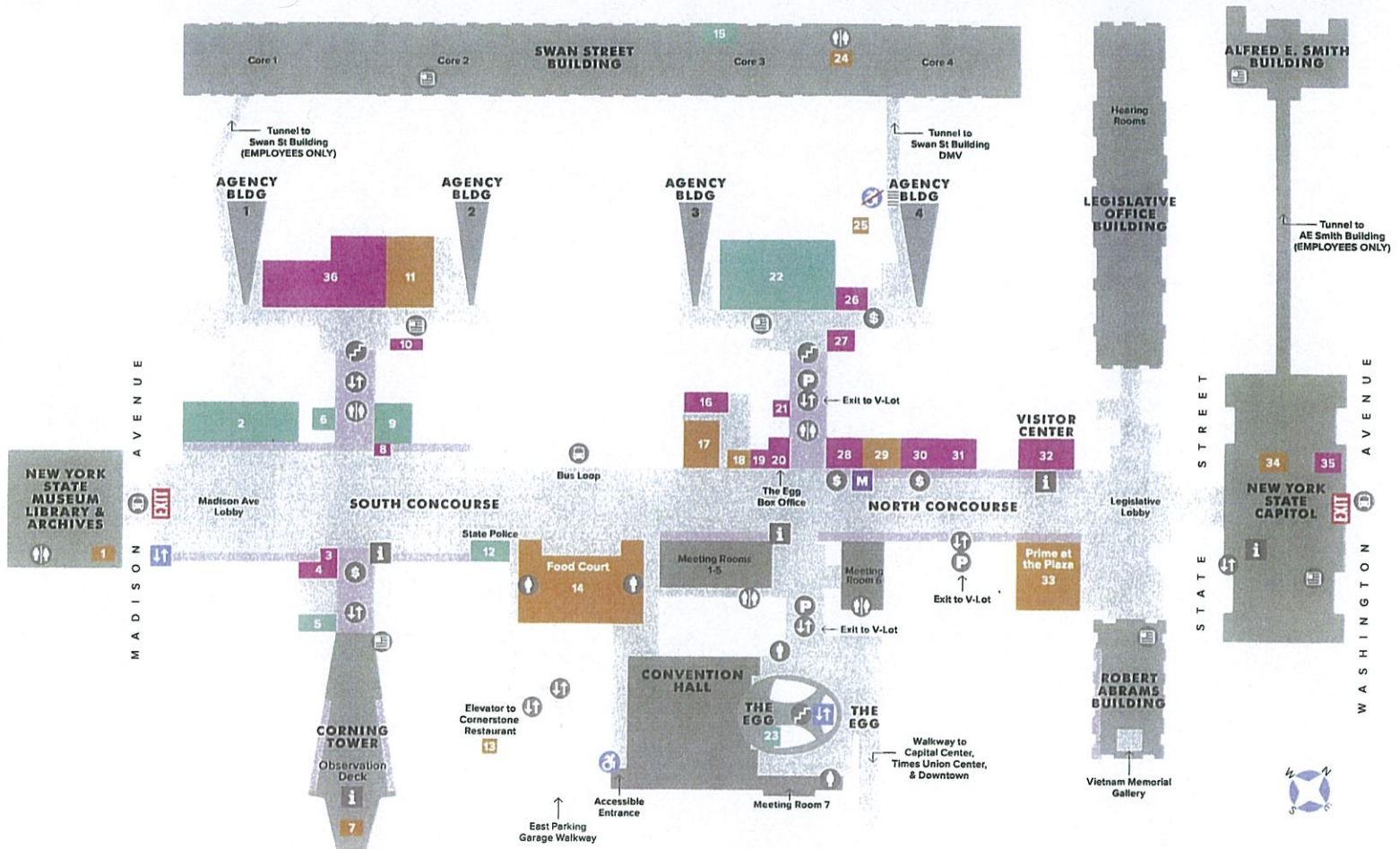




# WELCOME TO THE EMPIRE STATE PLAZA

empirestateplaza.ny.gov

## CONCOURSE LEVEL



### Map Key

- i** Information
- ATM** ATM
- Exit to Plaza** Exit to Plaza
- Elevator** Elevator
- Elevator to Plaza Level** Elevator to Plaza Level
- Parking (use elevators)** Parking (use elevators)
- CDTA Bus Stop** CDTA Bus Stop
- Newsstand Convenience Store** Newsstand Convenience Store
- M** Dr. Martin Luther King, Jr. Memorial
- Empire State Plaza Art Collection** Empire State Plaza Art Collection

### Food

- 1** Steuben Street Café
- 7** B-Rads Executive Bistro  
ID or Visitor Pass required
- 11** Au Bon Pain Bakery & Café
- 13** Cornerstone at the Plaza  
Plaza Level
- 14** Food Court  
Au Bon Pain | Auntie Anne's | Bombers  
Dutch Pot | Honest Weight | Kuma Ani  
McDonald's | PBD Kitchen | Pho Yum
- 17** Logan's Deli and Market
- 18** á La Mode Frozen Yogurt
- 24** Swan Street Cafeteria  
Subway | WV Pizza
- 25** Phil's Kitchen  
Plaza Level
- 29** Practical Magic Tea & Gifts
- 33** Prime at the Plaza Café
- 34** Dunkin Donuts

### Services

- 3** Just Jewelry Repair
- 4** Post Office
- 8** African Reflections
- 10** Scissor Wizard Hair Styling
- 16** American Red Cross
- 19** Patsy's Barber Shop
- 20** The Egg Box Office
- 21** Patsy's Shoe Shine
- 26** Emblem Health Family Dental
- 27** Save-Mor Dry Cleaners
- 28** KeyBank
- 30** SEFCU
- 31** Empire State College
- 32** Visitor Center & Gift Shop
- 35** Post Office
- 36** Retro Fitness

### State Offices

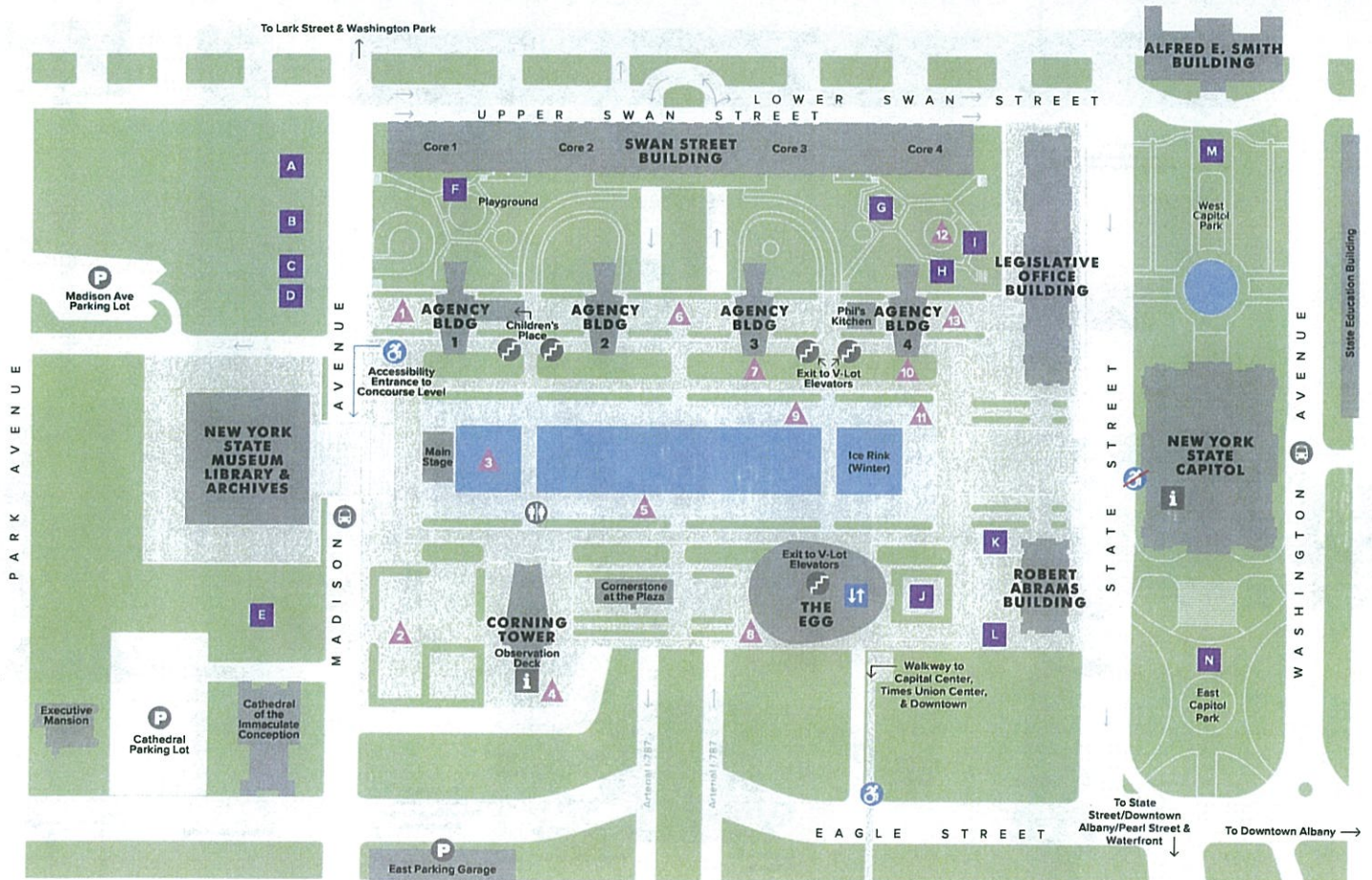
- 2** Media Services Room #146
- 5** Conference Room #125
- 6** Parking Management  
Room #144
- 9** Plaza Operations Room #130
- 12** NY State Police Room #115-1
- 15** Department of Motor Vehicles
- 22** Convention & Cultural Events,  
Curatorial Services Room #120
- 23** Convention Center Office



# WELCOME TO THE EMPIRE STATE PLAZA

empirestateplaza.ny.gov @twitter facebook

## PLAZA LEVEL



**i** Information   **↑** Elevator to Concourse   **⬇** Exit to Concourse   **P** Parking   **Ⓚ** CDTA Bus Stop   **→** One Way Street



### ▲ Governor Nelson A. Rockefeller Empire State Plaza Art Collection

- 1 **Forrest Myers**, *Untitled*, 1969-70
- 2 **Francois Stahly**, *Labyrinth*, 1970-71
- 3 **Alexander Calder**, *Triangles and Arches*, 1965
- 4 **James Rosati**, *Lippincott I*, 1967
- 5 **George Sugarman**, *Trio*, 1969-71
- 6 **Clement Meadmore**, *Verge*, 1971-72
- 7 **Ellsworth Kelly**, *Yellow Blue*, 1968
- 8 **Antoni Milkowski**, *Salem 7, 1/3*, 1965-67
- 9 **George Rickey**, *Two Lines Oblique*, 1968-71
- 10 **Claes Oldenburg**, *Geometric Mouse, Scale A, 1/6*, 1969
- 11 **Ronald Bladen**, *The Cathedral Evening*, 1972
- 12 **Julius Schmidt**, *Untitled*, 1966
- 13 **Lyman Kipp**, *Wild Rice*, 1967

### ■ Memorials

- |                                       |  |
|---------------------------------------|--|
| A Missing Person Remembrance          | L Vietnam Memorial                       |
| B Korean Veterans Memorial            | M George Washington Memorial             |
| C Women Veterans Memorial             | N General Philip Henry Sheridan Memorial |
| D Purple Heart Memorial               |  |
| E WWII Memorial                       |  |
| F Children's Memorial                 |  |
| G Police Officers Memorial            |  |
| H Parole Officers Memorial            |  |
| I Crime Victims Memorial              |  |
| J Fallen Firefighters Memorial        |  |
| K Emergency Medical Services Memorial |  |